

HOW H+H ARCHITECTS MADE PROJECT FORECASTING EASIER AND SAVED 3.5 HOURS PER WEEK *with BQE CORE*



ABOUT H+H ARCHITECTS

H+H Architects is the largest architectural practice in Western Australia. The head office is located in Albany, with regional offices in Kalgoorlie and Bunbury. H+H Architects established in 2006 through the merger of David Heaver & Associates with Ian Howard & Associates.

THE PROBLEM

- 1 Inaccurate data
- 2 Separation of information
- 3 Inability to project forecast

The H+H Architects team has relied on offline spreadsheets for project planning and a secondary web-based platform for time tracking since company inception in 2006.

The separation of information and manual analysis had them spending an average of 4 hours every week preparing forecasts, inserting data, and creating reports.



Tom joined H+H Architects in 2006 and became a Director of the practice in 2008. He has a focus on housing, education, community projects and sustainable design.

Tom Stevens
Director, H+H Architects

"At the end of the financial year in 2020, our team was coming across a few issues where time against something was wrong," said Tom Stevens, Director at H+H Architects.

"Additionally, the secondary web-based platform that allowed us to track time gave basic information and did not allow any project forecast."

They were in a building boom in the market, and could not afford to lose visibility over their projects.



THE SOLUTION

The management team found that CORE was easy to use from the start. And whenever they had any issues, the BQE team was very responsive.

“We made a quick decision when it came to BQE CORE. A project management system that was reasonably priced and offered different levels of functionality made sense. We saw that CORE could help us improve data accuracy at various project stages.”

Clearer Visibility of Project Performance at Phase Levels

After using CORE for a year, Tom and his team have clarity of project progress, financial and staff performance, and tracking against project deadlines. They find it easy to keep track of profitability and to split projects into different project stages.

“CORE solved the challenges we were facing related to inaccurate data and manual data entry for our project management and time tracking needs.”

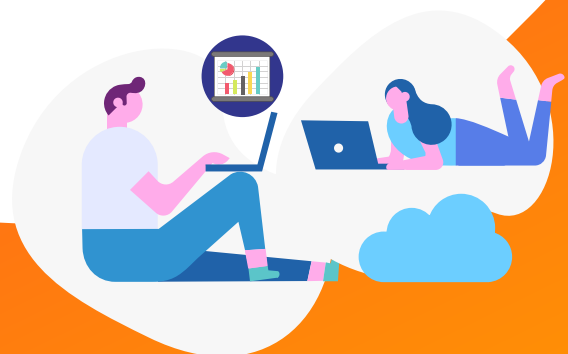
“For any architectural firm, the most important thing is to forecast your projects so that you know where you are going in the next year or so,” Stevens added. “CORE has made it easier for the team to allocate projects under different management and forecast for other offices.”

With easy access and clearer visibility of previous project costs, the team at H+H Architects is more confident when providing fee proposals for clients.

Managing Business Anytime - and from Anywhere

Cloud solutions like BQE CORE provide greater transparency, accountability, and insights into how businesses perform at a project level. The ability to access this type of data in real-time - and from anywhere - has been invaluable for H+H Architects' clients, job performance, and teams.

“We like how CORE is accessible on the web. Some of our staff work from home, and now they have the flexibility to log in from wherever they are,” said Stevens.





THE RESULTS

Time Spent on Forecasting and Reporting Has Improved from Hours to Minutes... Per Week!

The shift from spreadsheets to BQE CORE has been a wise move for H+H Architects. Forecasting, inserting data, and generating reports used to take the team 4 hours every week.

Now it takes roughly 22 minutes.

BQE CORE has saved a tremendous amount of time on forecasting and reporting for the team at H+H Architects. Sticking to existing staff salaries and reports for paying levels has made forecasting and reporting easier.

3.5 hours saved per week that used to be spent forecasting and reporting

This savings frees up time for them to focus on better servicing their clients and adapt to volumes of work from Western Australia's building boom.

LOOKING FORWARD

Western Australia is going through a building boom, so turnover increased dramatically, and H+H Architects is up to their heads on where they are. BQE CORE will give their team the ability to manage resources efficiently and gain visibility of project performance and cash flows on the other side of the building boom.

In the future, the management team is planning to use additional BQE CORE features, such as billing.



"All it took was a week to get CORE up and running for the team. If you are interested in BQE CORE, I recommend using BQE's training services for your team during the transition. "

Next Steps

Book a demo today to understand how BQE CORE can help boost efficiency, productivity and profitability for your firm.